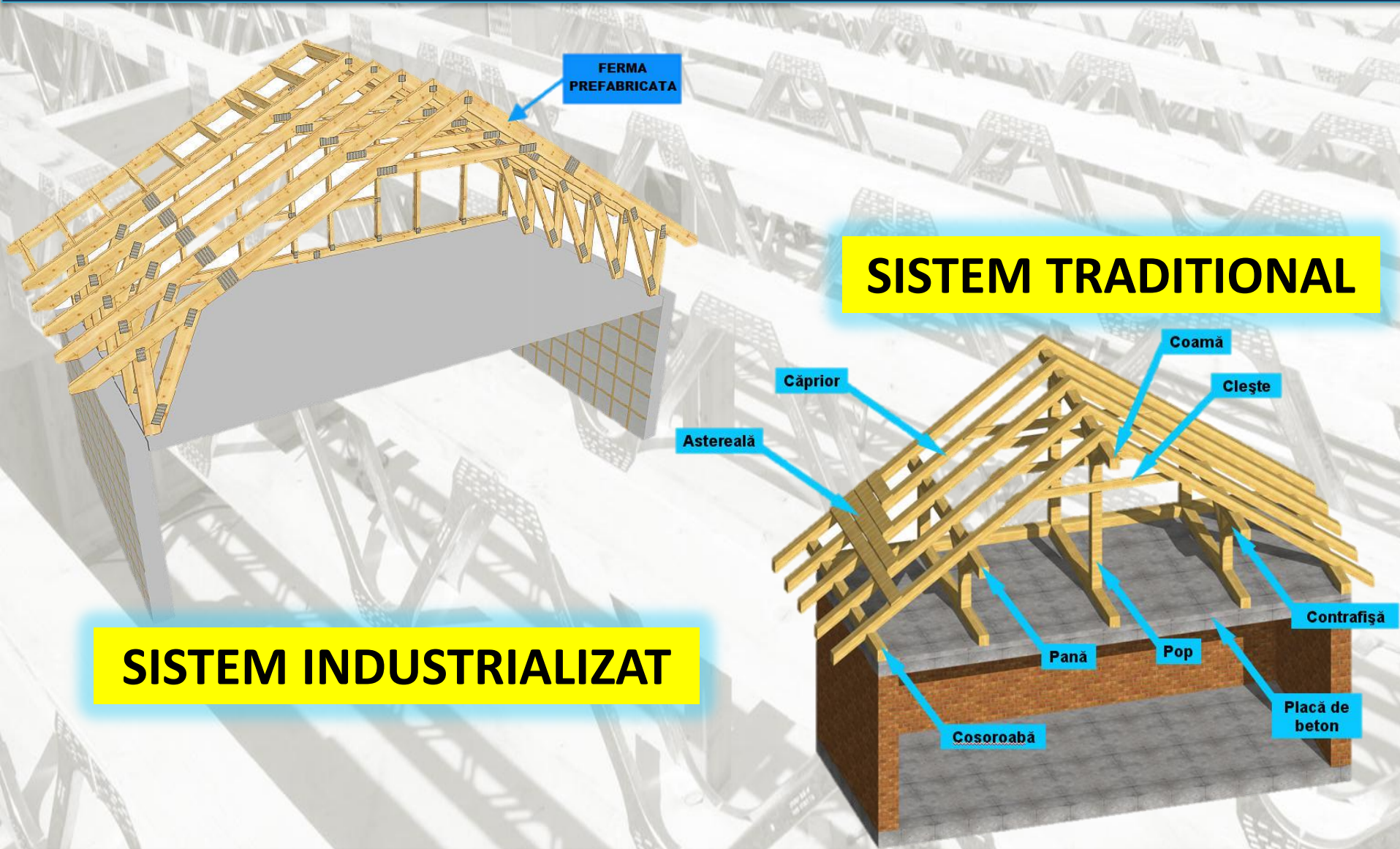


MANSARDA DIN LEMN

COMPARATIE SISTEM INDUSTRIALIZAT vs TRADITIONAL



SISTEM INDUSTRIALIZAT

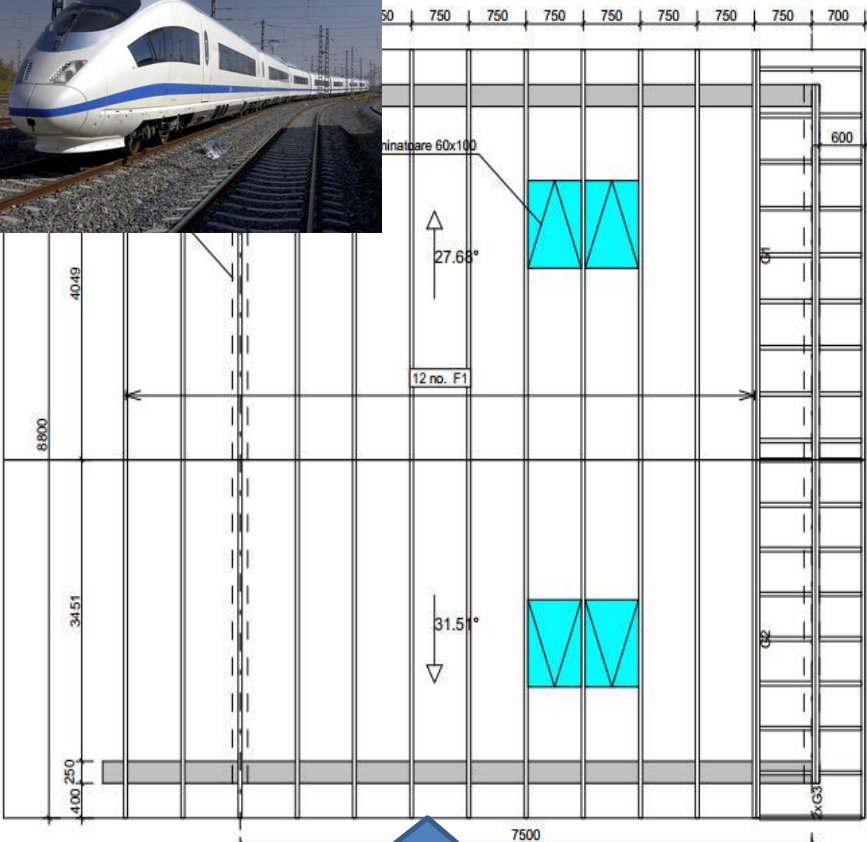
SISTEM TRADITIONAL

Mai puțin in santier, mai mult in atelier!

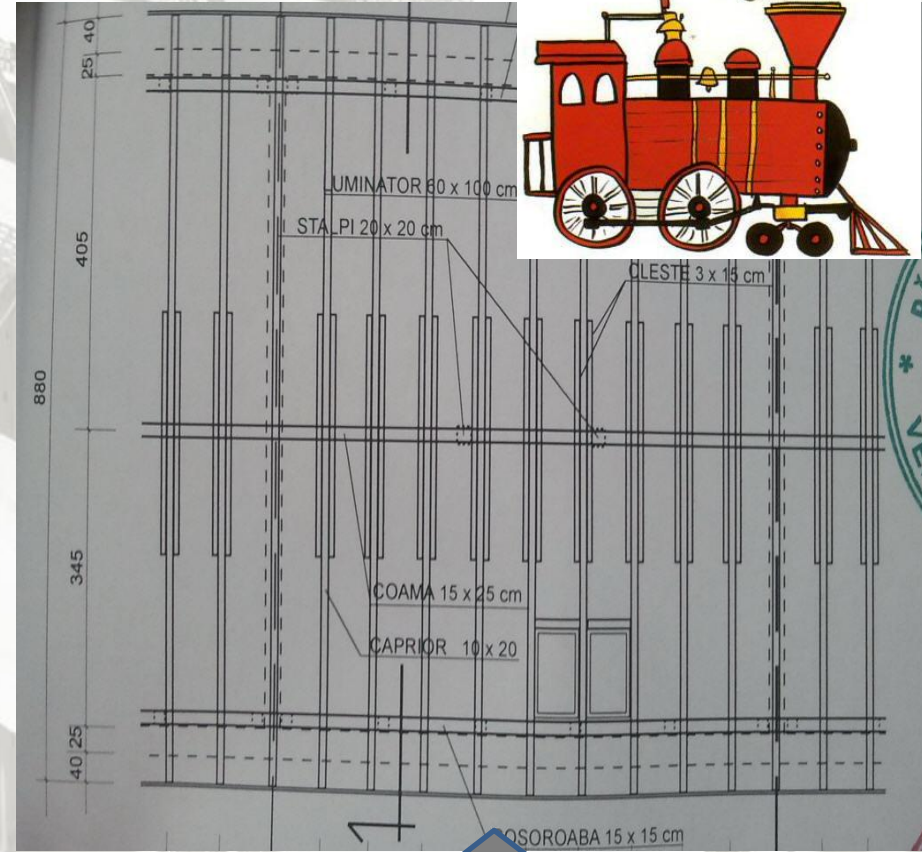
PROIECTUL

SISTEM INDUSTRIALIZAT

SISTEM TRADITIONAL



Proiectare: 1 ora



Proiectare: 8 ore

Mai puțin in santier, mai mult in atelier!

CONSUM LEMN

SISTEM INDUSTRIALIZAT

SISTEM TRADITIONAL

SUMAR CANTITATE

Grad	Volum [m3] Net	Greut. [kg]	Cant
C24	29.447	12367.55	1662
Total	29.447	12367.55	1662

Dimensiune	Lungime [m] Net	Cubaj [m3] Net
48 x 200 C24	1882.53	18.072
48 x 180 C24	975.91	8.432
48 x 150 C24	303.61	2.186
48 x 135 C24	75.43	0.489
48 x 100 C24	12.80	0.061
48 x 60 C24	71.58	0.206
Total	3321.86	29.447

Kit Complet + Contravanturi si pierderi incluse = 30 m³

TOTAL-30m³ = 4500 €

Necesar Lemn						
Nr. Crt.	Denumire	Dimensiuni			Nr. Buc.	Volum pe nr. buc.
		Grosime cm	Latime cm	Lungim cm		
1	Cosoroaba	15	15	400	40	3.600
2	Grinda	15	15	400	40	3.600
3	Coama	15	25	400	45	6.750
4	Pop	15	15	200	160	7.200
5	Contrafisa	15	15	200	140	6.300
6	Pop	20	20	400	30	4.800
7	Contrafisa	15	15	300	40	2.700
8	Caprior	10	20	700	110	15.400
9	Cleste	15	3	300	200	2.700
VOLUM TOTAL						53.05

Cubaj cu pierderi incluse = 53 m³

TOTAL=53m³ = 7950 €

Mai putin in santier, mai mult in atelier!

COST TOTAL DETALIAT

Componente	SISTEM INDUSTRIALIZAT		SISTEM TRADITIONAL	
Proiect DDE	528 m ²	900 €	528 m ²	1400 €
Material Lemnos	30 m ³ inclus pierderi	4500 €	53 m ³ inclus pierderi	7950 €
Uscare lemn	30 m ³	450 €	53 m ³	800 €
Tratament lemn		1500 €		2600 €
Placi Multicui	2000 buc.	1200 €		
Placi Perforate			160 buc.	300 €
Scoabe			900 buc.	600 €
Coltare metalice	360 buc.	300 €	360 buc.	300 €
Conexpanduri	360 buc.	250 €	360 buc.	250 €
Cuie	60 kg cuie striate+ lise	150 €	160 kg cuie lise	130 €
Greutate	13 tone		23 tone	
Manopera preuzinare fabrica, transport, macara montaj	528 m ²	5900 €		
Manopera, transport, macara, palan			528 m ²	6820 €
Timp montaj 4 muncitori	9 zile		20 zile	
TOTAL		15150 €		21150 €
Total/scara imobil		1894 €		2644 €

Mai putin in santier, mai mult in atelier!

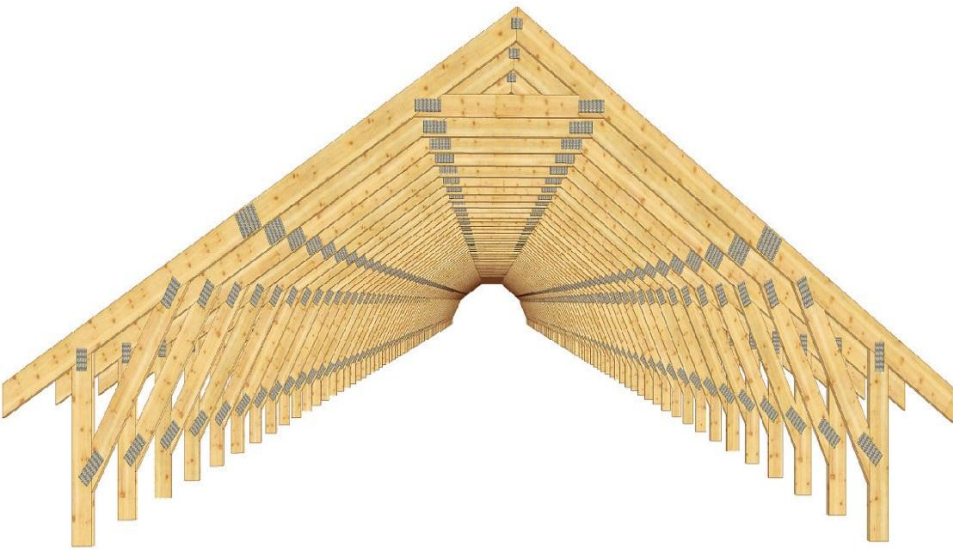
COST TOTAL

SISTEM INDUSTRIALIZAT

15150 €

SISTEM TRADITIONAL

21150 €

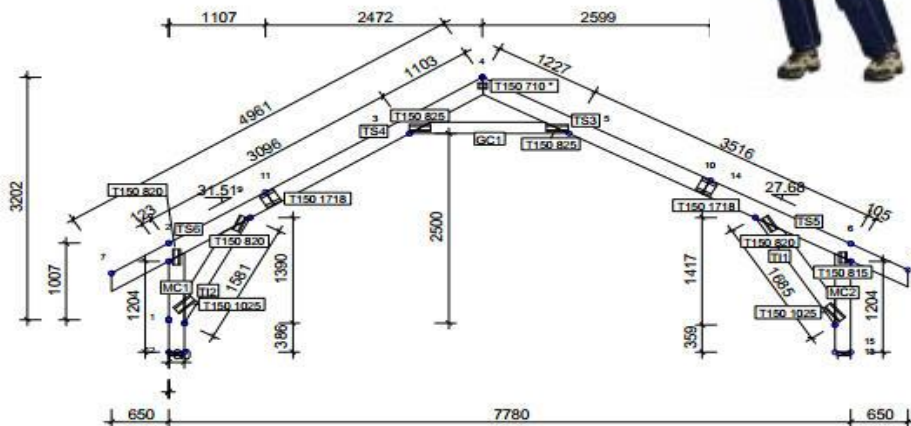


Mai putin in santier, mai mult in atelier!

SISTEM INDUSTRIALIZAT

DOCUMENTE SUPLIMENTARE: DETALII DE TAIERE

F1 - 79 nr. 1-strat

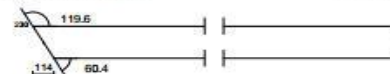


Greutate ferma: 66 kg/pliu

SCARA 1:75

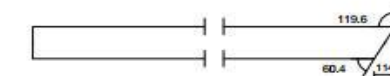
TALPA SUP. - TS3

4 - 10 Dim./Clasa: 48 x 200 C24
Total lungime / stoc: 2935 / 3000 mm
T / C / B: 2935 / 2878 / 2821 mm
Bucati per pliu: 1 buc.
Cant. totala: 79 buc. (79tdr)



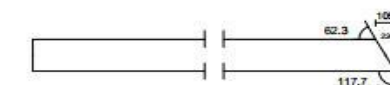
TALPA SUP. - TS4

11 - 4 Dim./Clasa: 48 x 200 C24
Total lungime / stoc: 2900 / 2900 mm
T / C / B: 2900 / 2843 / 2786 mm
Bucati per pliu: 1 buc.
Cant. totala: 79 buc. (79tdg)



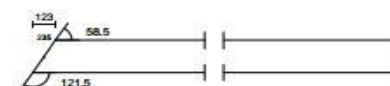
TALPA SUP. - TS5

10 - 8 Dim./Clasa: 48 x 200 C24
Total lungime / stoc: 2647 / 2700 mm
T / C / B: 2642 / 2595 / 2647 mm
Bucati per pliu: 1 buc.
Cant. totala: 79 buc. (79tdr)



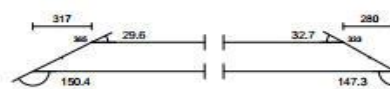
TALPA SUP. - TS6

7 - 11 Dim./Clasa: 48 x 200 C24
Total lungime / stoc: 2184 / 2200 mm
T / C / B: 2061 / 2123 / 2184 mm
Bucati per pliu: 1 buc.
Cant. totala: 79 buc. (79tdg)



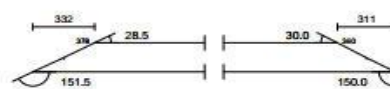
TALP INF. - T11

14 - 15 Dim./Clasa: 48 x 180 C24
Total lungime / stoc: 1685 / 1700 mm
T / C / B: 1088 / 1387 / 1685 mm
Bucati per pliu: 1 buc.
Cant. totala: 79 buc. (79tdr)



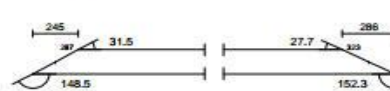
TALP INF. - T12

1 - 9 Dim./Clasa: 48 x 180 C24
Total lungime / stoc: 1581 / 1600 mm
T / C / B: 938 / 1260 / 1581 mm
Bucati per pliu: 1 buc.
Cant. totala: 79 buc. (79tdg)



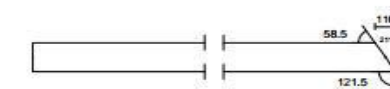
CLESTE - GC1

3 - 5 Dim./Clasa: 48 x 150 C24
Total lungime / stoc: 1829 / 1900 mm
T / C / B: 1299 / 1564 / 1829 mm
Bucati per pliu: 1 buc.
Cant. totala: 79 buc.



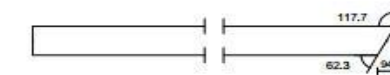
MONTANT CAPAT - MC1

12 - 2 Dim./Clasa: 48 x 180 C24
Total lungime / stoc: 1315 / 1400 mm
T / C / B: 1204 / 1259 / 1315 mm
Bucati per pliu: 1 buc.
Cant. totala: 79 buc. (79tdg)



MONTANT CAPAT - MC2

13 - 6 Dim./Clasa: 48 x 180 C24
Total lungime / stoc: 1298 / 1300 mm
T / C / B: 1298 / 1251 / 1284 mm
Bucati per pliu: 1 buc.
Cant. totala: 79 buc. (79tdr)



PROIECT NR.
Manssada Balint Marilena

DESENAT:

DESENE PT. PRODUCTIE

Pagina 1(2)

TOLERANTA AMPLASARE CONECTORI: 10 mm

20121011
TIMP: 10.16
VERSIUNEA: 2012 SR2

NUMAR DESEN

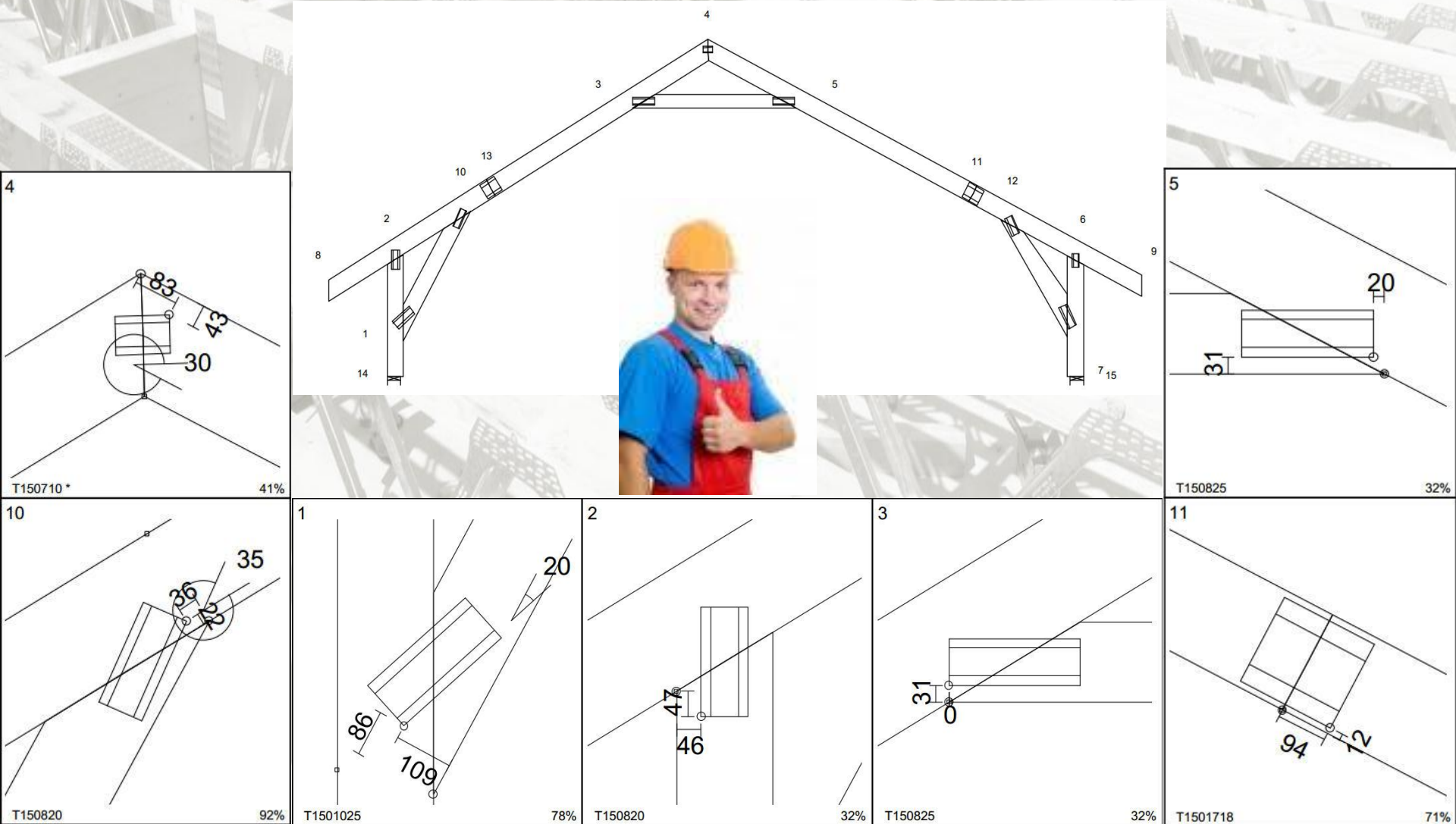
1

Truss F1

Mai putin in santier, mai mult in atelier!

SISTEM INDUSTRIALIZAT

DOCUMENTE SUPLIMENTARE: DETALII CONECTORI



Mai puțin în șantier, mai mult în atelier!

SISTEM INDUSTRIALIZAT

DOCUMENTE SUPLIMENTARE: NOTE DE CALCUL

INC. STANDARD

INC. PERMAN.

Talpa sup. Stg	=	0.40 kN/m ²
Talpa sup. Dr	=	0.40 kN/m ²
Talpa inf. 1	=	0.25 kN/m ²
Talpa inf. 2	=	0.25 kN/m ²
MC. Stg 1	=	0.00 kN/m ²
MC. Dr 1	=	0.00 kN/m ²
Grinda cleste	=	0.26 kN/m ²

Greutatea constructiei

Talpa sup. Stg	=	0.04 kN/m
Talpa sup. Dr	=	0.04 kN/m
Talpa inf. 1	=	0.04 kN/m
Talpa inf. 2	=	0.04 kN/m
MC. Stg 1	=	0.04 kN/m
MC. Dr 1	=	0.04 kN/m



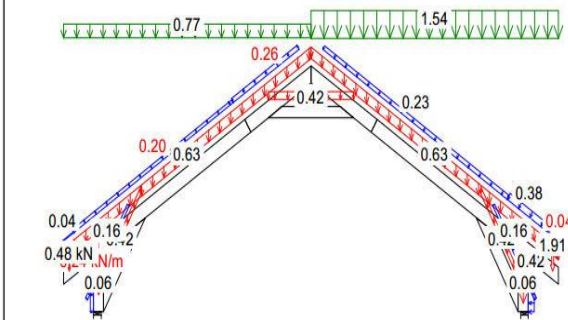
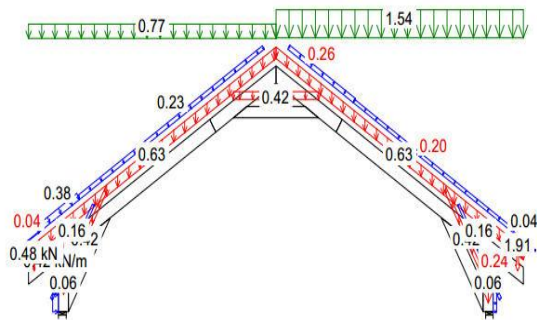
INC. ZAPADA

Val.de baza	=	2.00 kN/m ²
Altitudine	=	600 [m]
Parazapada	Nu	
zapada pe streasina stanga	Da	
dreapt	Da	

INC. VANT

Val.de baza	=	1.00 kN/m ²
-------------	---	------------------------

45 | Inc.permanenta + Zapada stanga(d) + U + Vant dreapta



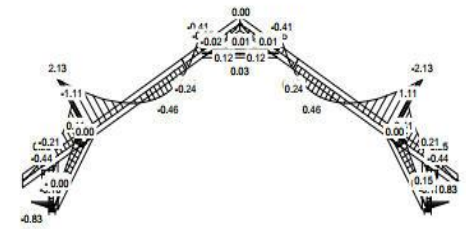
46 | Inc.permanenta + Zapada dreapta(d) + U + Vant Stanga

48 | Inc.permanenta + Zapada dreapta(d) + U + Vant dreapta

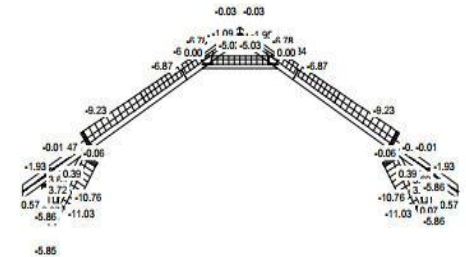
4 M 1,35 * Inc.permanenta + 1.5*Zapada + U

F1

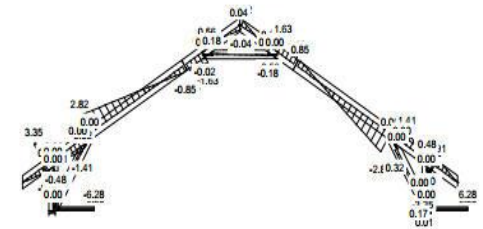
MOMENT



FORTA AXIALA



FORTA TAIETOARE



Mai putin in santier, mai mult in atelier!